

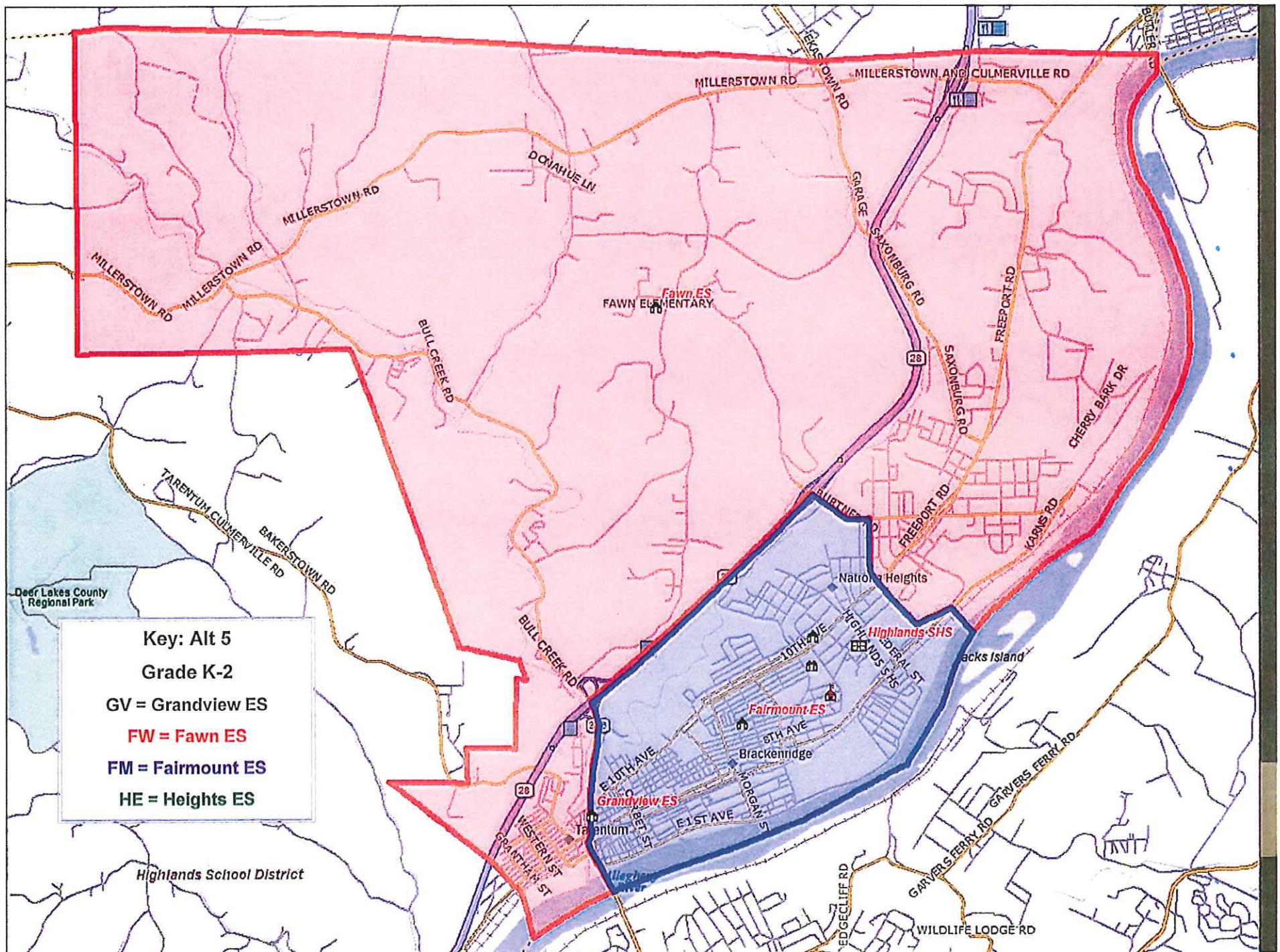
Highlands School District

2011-2012 Elementary (K-5)

Boundary Analysis

Bus Run Study





Findings: Alternate 5

- Creates balanced class size at Fawn and Fairmount ES
- Allows for late enrollment, typically in Fawn ES area
- Improves Title 1 eligibility by school
- Creates Grade K class at Heights ES
- Allows for reasonable and balanced bus runs
 - Plans for 15 minute run between Grandview and Fawn ES
 - Plans for 10 minute runs between Grandview and Fairmount ES
 - Results in most runs being 30 minutes or less including second school drop